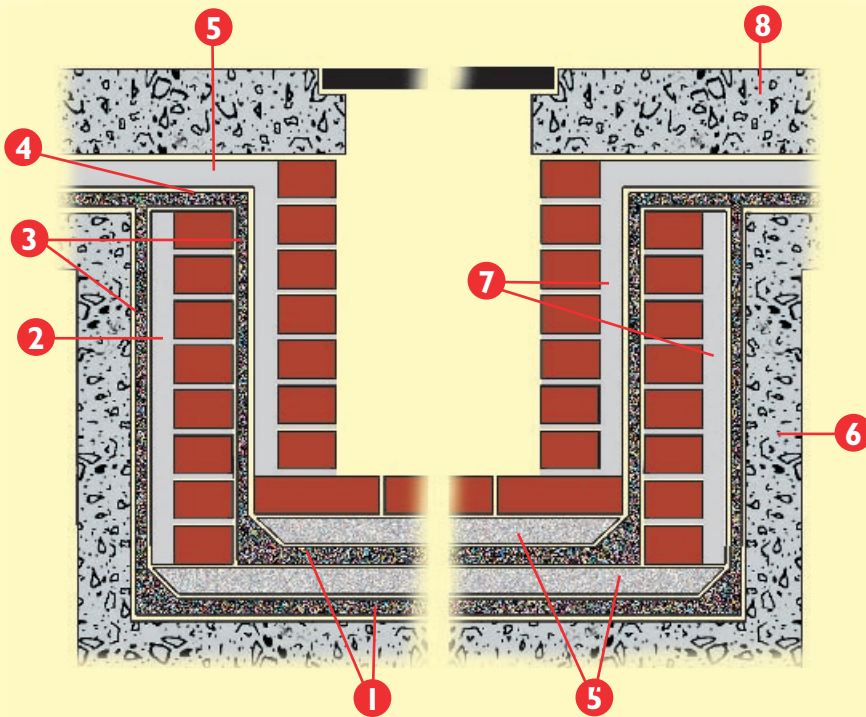


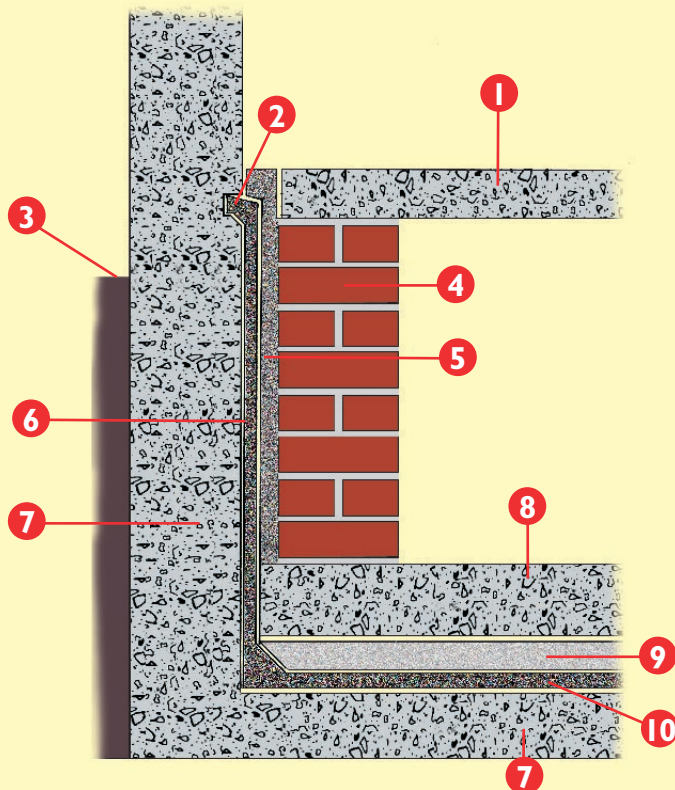
**5** Sump or inspection chamber in externally applied mastic asphalt tanked basement



- 1) 30MM THREE COAT MASTIC ASPHALT
- 2) 40MM SPACE FLUSHED UP WITH MORTAR (COURSE BY COURSE)
- 3) 20MM THREE COAT MASTIC ASPHALT WITH FILLET TO HORIZONTAL
- 4) 30MM THREE COAT MASTIC ASPHALT
- 5) 50MM PROTECTIVE SAND AND CEMENT SCREED
- 6) CONCRETE BASE
- 7) 40MM SPACE FLUSHED UP WITH MORTAR (COURSE BY COURSE)
- 8) REINFORCED STRUCTURAL CONCRETE FLOOR SLAB

**TANKING**

**6** Internally applied mastic asphalt tanking



- 1) REINFORCED CONCRETE STRUCTURAL FLOOR SLAB
- 2) 25 X 25MM CHASE CAST IN CONCRETE
- 3) GROUND LEVEL
- 4) LOADING AND PROTECTING BRICKWORK
- 5) 40MM SPACE FLUSHED UP WITH MORTAR (COURSE BY COURSE)
- 6) 20MM THREE COAT MASTIC ASPHALT
- 7) REINFORCED CONCRETE STRUCTURAL WALL AND FLOOR
- 8) CONCRETE LOADING SLAB
- 9) 50MM PROTECTIVE SAND AND CEMENT SCREED
- 10) 30MM THREE COAT MASTIC ASPHALT